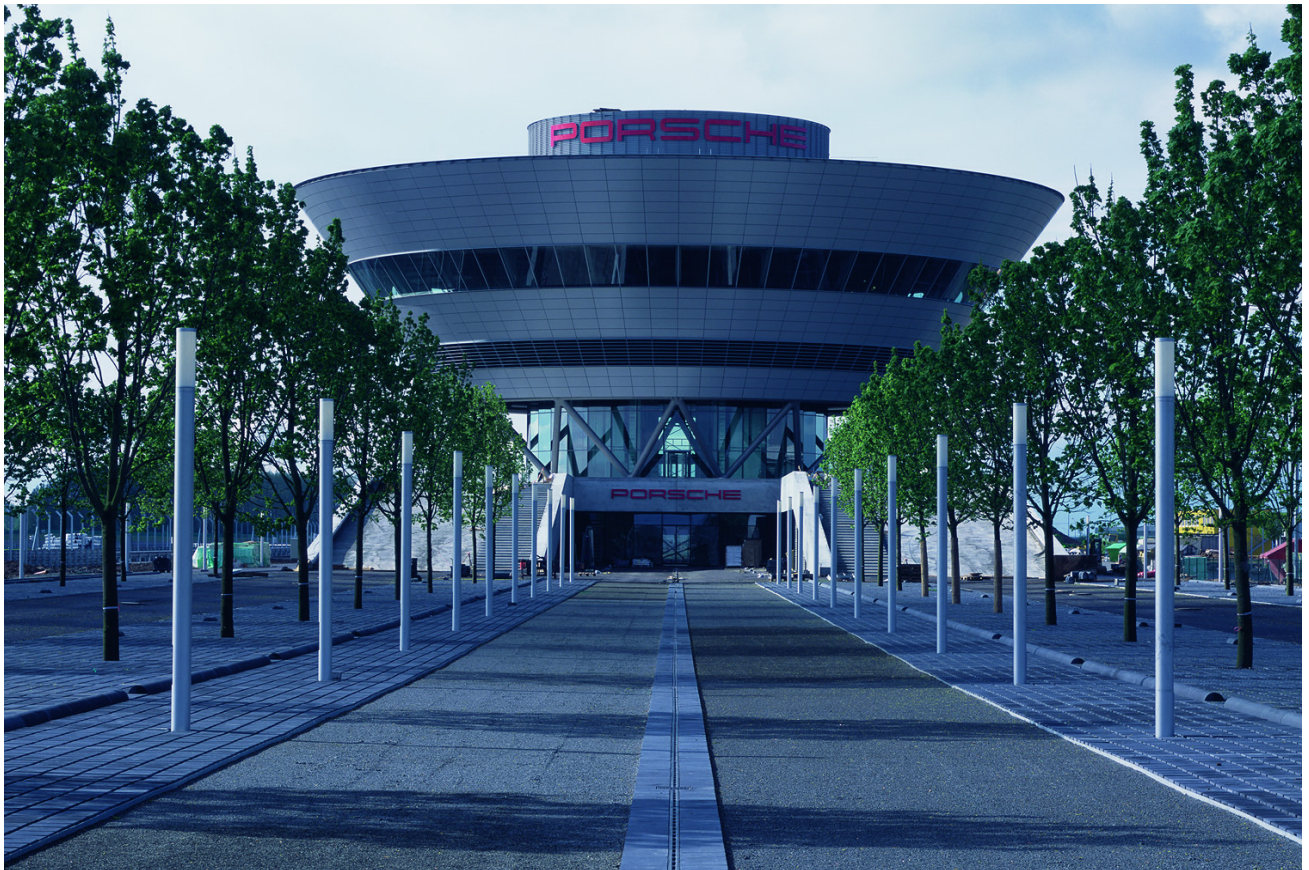




Porsche Centre



Figures and facts:

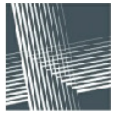
- ◆ Site: Leipzig
- ◆ Owner: Porsche AG
- ◆ Planning:
Von Gerkan, Marg & Partner,
Architects
Schlaich, Bergemann & Partner
GbR, Engineer's firm
- ◆ Construction of steel-structure:
April to October 2001
- ◆ Weight:
Steel 662 t
Gussets 49 t

Building:

- ◆ 3-storied exhibition-building
expanding in size from bottom to
top
- ◆ Supporting structure of the
façade
- ◆ Dimensions:
Height approx. 27 m
Diameter approx. 60 m
- ◆ Separate gatekeeper's lodge

Parts by Maurer Söhne:

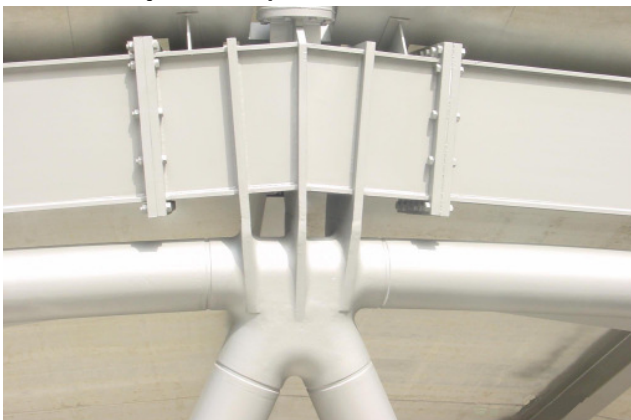
- ◆ Manufacturing and erection
of the complete steel-
structure
- ◆ Painting work on site incl.
3'320 m² • F30-fire-
protection



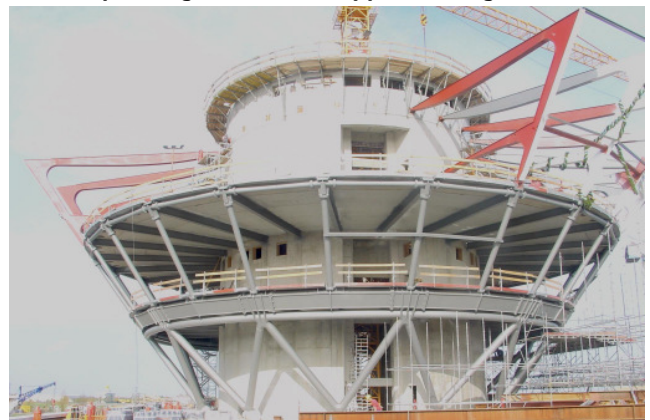
Pre-assembly with templates on site



Beams spanning 17 m of unsupported length



Three-dimensional joint of cast and profiled steel



Erection of the steel-structure for the 3rd floor

- ◆ Box section beams of changing dimensions and with articulated joints
- ◆ Three-dimensional joints of welded plates
- ◆ Tubular supports, diameter of tubes e. g. 508 mm x 10 mm
- ◆ Composite steel-structure
- ◆ Supporting structure of the façade
- ◆ Three-dimensional cast elements
- ◆ Complicated welding-technique on site (thickness of plates up to 70 mm)



Maurer Söhne Headquarters
 Frankfurter Ring 193, 80807 München
 Phone +49 / 89 / 3 23 94 - 3 19
 Fax +49 / 89 / 3 23 94 - 3 55
 e-mail nolte@maurer-soehne.de
 Internet www.maurer-soehne.de

Maurer Söhne Branch Office
 Zum Holzplatz 2, 44536 Lünen
 Phone +49 / 2 31 / 4 34 01 - 0
 Fax +49 / 2 31 / 4 34 01 - 11

Maurer Söhne Branch Workshop
 Kamenzer Straße 4-6, 02994 Bemsdorf
 Phone +49 / 3 57 23 / 2 37 - 0
 Fax +49 / 3 57 23 / 2 37 - 20